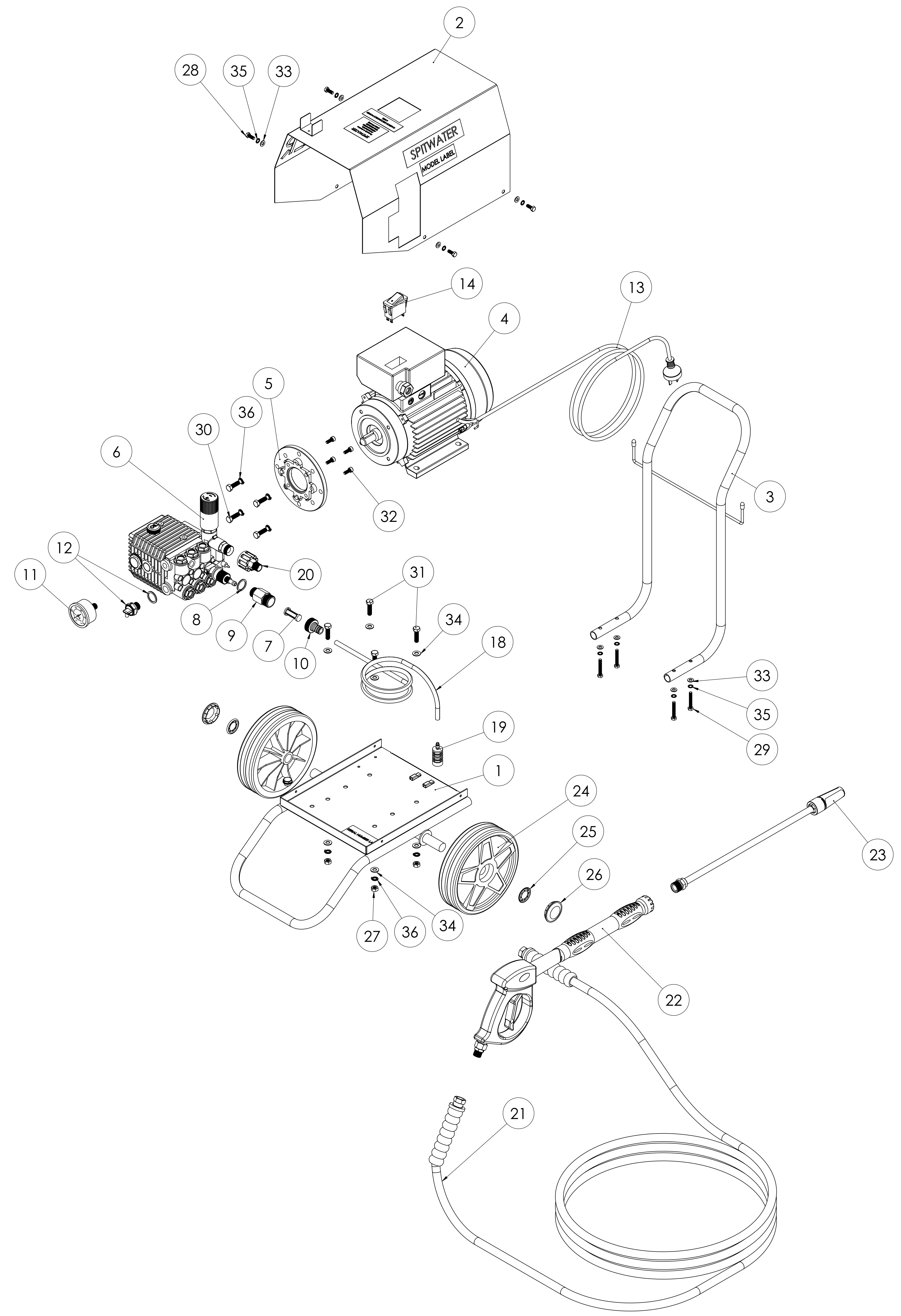


PROPRIETARY CONFIDENTIAL AND COMPLIANCE: THE INFORMATION CONTAINED IN THIS DRAWING IS THE SOLE PROPERTY OF SPITWATER AUSTRALIA ANY REPRODUCTION IN PART OR AS A WHOLE WITHOUT THE WRITTEN PERMISSION OF SPITWATER AUSTRALIA Pty.Ltd. IS PROHIBITED. ANY CHANGES REQUIRE ENGINEERING OFFICE APPROVAL PRIOR TO IMPLEMENTATION. IF IN DOUBT CONSULT YOUR TEAM LEADER OR PRODUCTION MANAGER.



ITEM NO.	PART NUMBER	MATERIAL	DESCRIPTION	QTY.
1	48018		BASE COMPLETE	1
2	48081		COVER COMPLETE	1
3	48108		HANDLE COMPLETE	1
4	48314		MOTOR 2.2kW 2POLE-MEC 90L-MALESHAFT18mm	1
5	48243-A		FLANGE SOGA 2.2kW 2P	1
6	IPP74		WW95 DX HOLLOW SHAFT+BS HEAD+VALVE M22	1
7	I92892500		FILTER D. 12X35	1
8	I96751400		WASHER 21.5X27X1.5	1
9	47013	70292/C	BRASS REDUCER 1/2" M BSPP - 3/4" M BSPP	1
10	70559		TAIL PIECE COMPLETE 3/4" F BSPP - SNAP ON	1
11	47104		GAUGE BACK ATTACH 50mm 250bar 1/4" M BSPT	1
12	47400		THERMAL VALVE 10bar 63° C 3/8" M BSPP 1/4" M 90° HOSE BARB	1
13	70506-B01		POWER CABLE 5m COMP WITH 15A AUS PLUG	1
14	48942		SWITCH ETA 3120 20A WITH OVERLOAD	1
15	70360-A0125G		CABLE PVC 1x2.5mm² BLUE COMPLETE	1
16	70360-B0125G		CABLE PVC 1x2.5mm² BROWN COMPLETE	1
17	70491		INSULATED COVER	2
18	44539-C	70036/A	DETERGENT HOSE 1200mm	1
19	46241		2 STEP PLASTIC DET FILTER 1/4" HOSE BARB	1
20	PA26025050		AR1 B M22 3PCS SCREW-TYPE CPL.-3/8M BSP	1
21	48749-A		H/P HOSE 8m 3/8" F BSPP-3/8" F BSPP 210bar	1
22	M4022105010		MV925+MV70+ARF 30l/min 280bar 160°C	1
23	SWA001		SINGLE LANCE IDROJET 035	1
24	48132		WHEEL AC 200 200mm - BORE Ø20.0mm	2
25	33265-C		HUB CAP BLOCK 20 Ø20.0mm	2
26	33265-B		HUB CAP COVER G48 BLACK	2
27	70050-F		FULL NUT M8 x 1.25 - 6	4
28	70104-I		SCREW HEX HEAD M6 x 1.00 x 16 - 4.8	4
29	70104-X		SCREW HEX HEAD M6 x 1.00 x 40 - 4.6	4
30	70106-P		SCREW HEX HEAD M8 x 1.25 x 25 - 4.6	4
31	70106-S		SCREW HEX HEAD M8 x 1.25 x 30 - 4.6	4
32	70120-I		SOCKET CAP SCREW M6 x 1.00 x 16 - 12.9	4
33	70200-E		FLAT WASHER 6.50 x 13 x 1.20	8
34	70200-H		FLAT WASHER 8.50 x 17 x 1.40	8
35	70210-D		INTERNAL TOOTH LOCK WASHER M 6	8
36	70220-F		SPRING LOCK WASHER M8	8
37	20200		AUSTRALIAN MADE LABEL	1
38	20205		PARTS & SERVICE LABEL	1
39	20222		CAUTION DISCONNECT POWER LABEL	2
40	20240		SERIAL NUMBER LABEL	1
41	20241		MODEL LABEL	1
42	20253		SPITWATER LOGO SMALL LABEL	1
43	48630		PACKAGING 10-120 C	1
44	48630-A		PACKAGING 10-120C	1
45	20242		PACKAGING LABEL	2

REV.	SERIAL NUMBER	ISSUED FOR CONSTRUCTION/DN	AMENDMENT	BY: CHK/APP	DATE
A					6/04/2016

NOTES:

	DATE	NAME
APPROVED		
CHECKED		
DRAWN	13/09/2017	Rajdev

DO NOT SCALE DRAWING

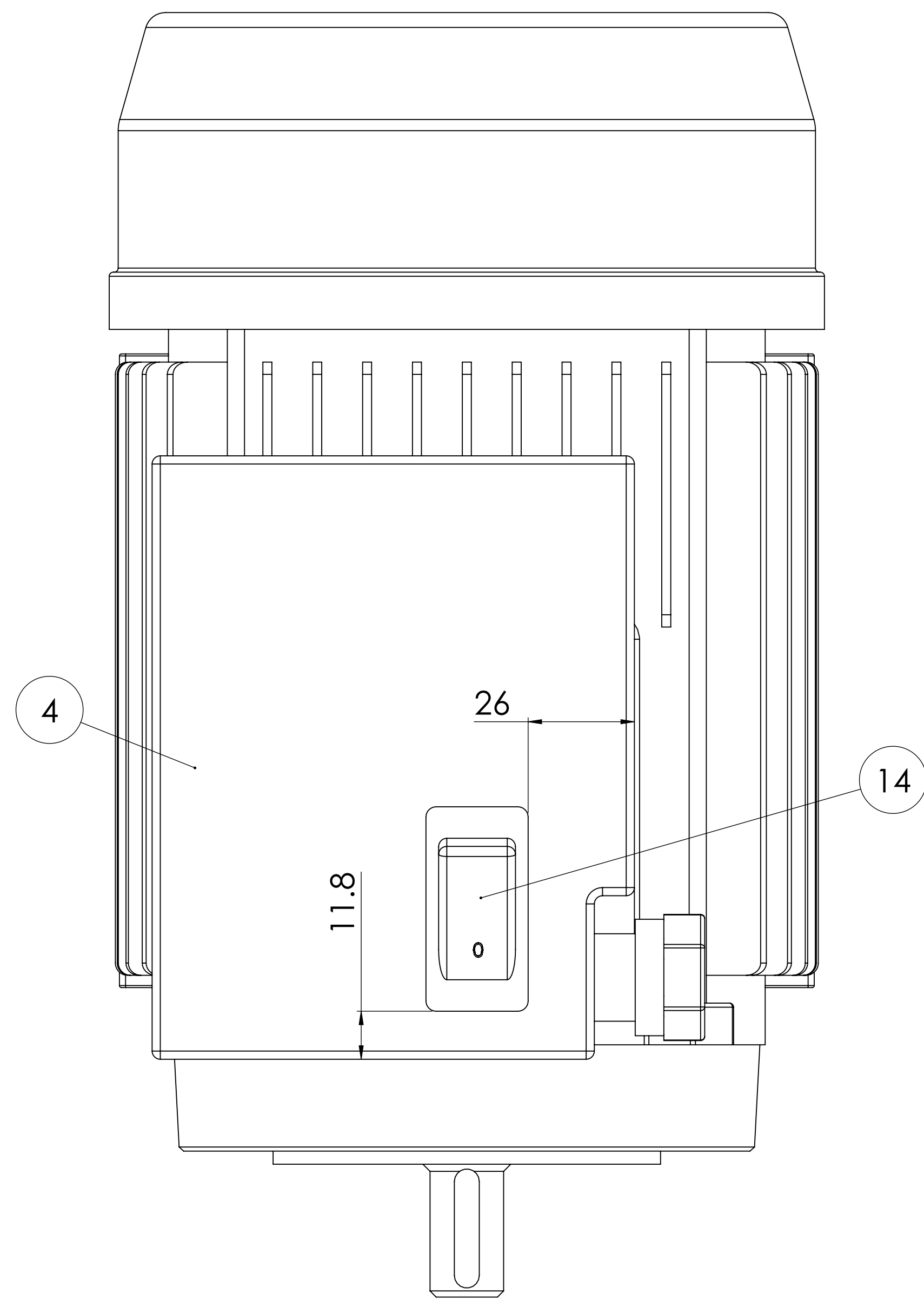
SCALE
1:4

THIRD ANGLE

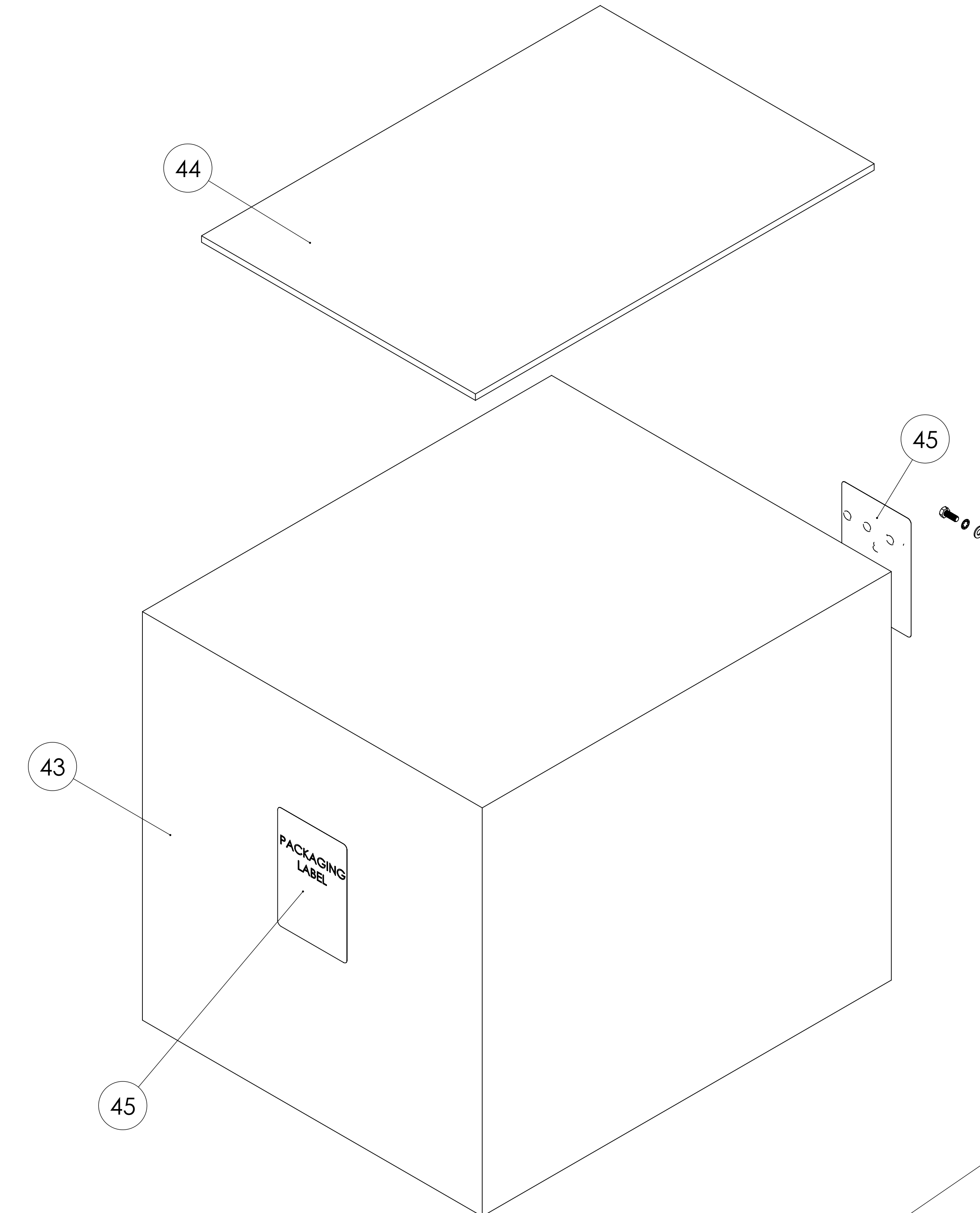
SPITWATER®
AUSTRALIA

HEAD OFFICE AND MANUFACTURING PLANT
953 METRY STREET, ALBURY,
NSW 2640, AUSTRALIA
PH. 02 60257255 FAX. 02 60401187
E-MAIL: enquiries@spitwater.com
WEB SITE: www.spitwater.com

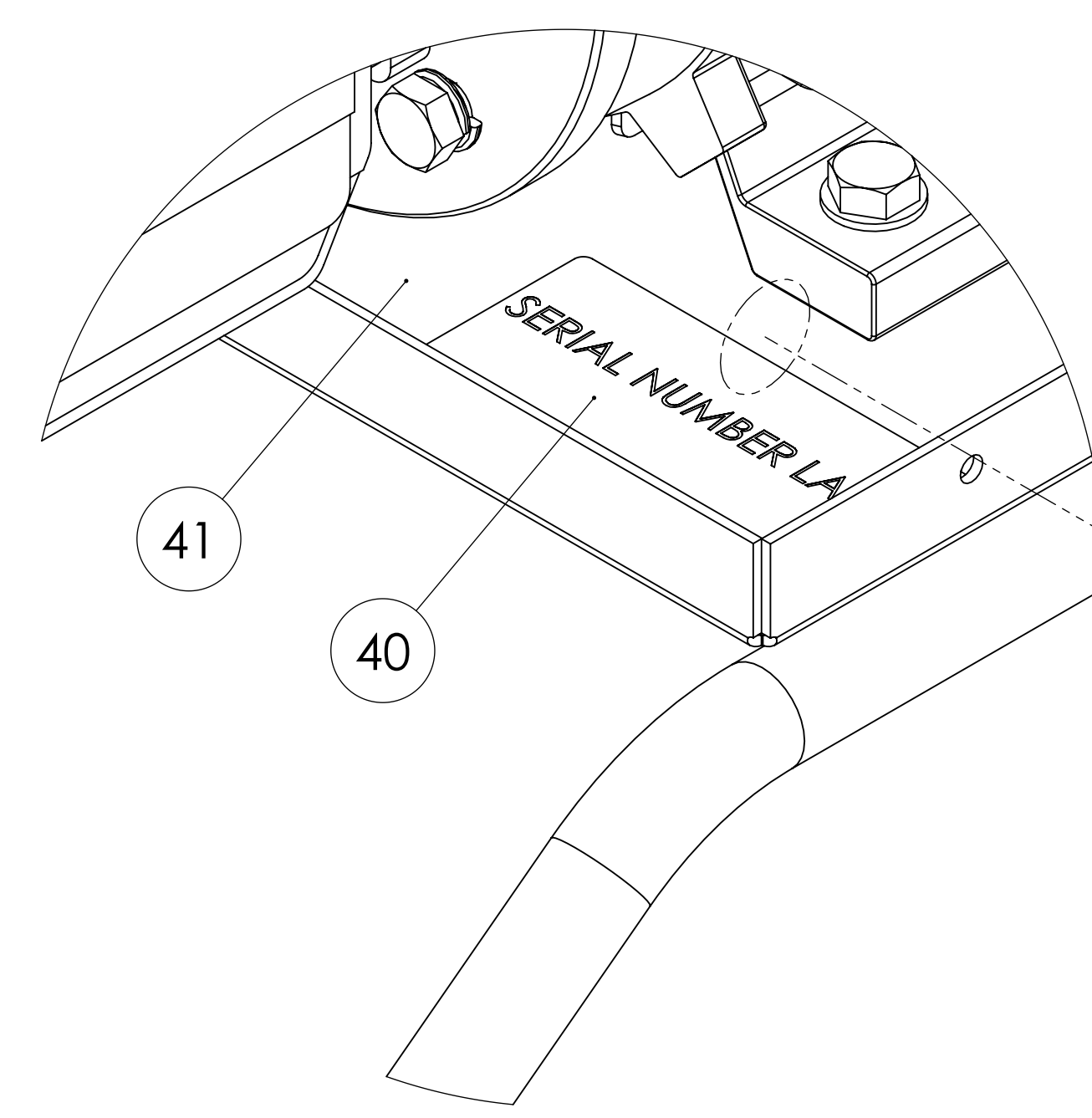
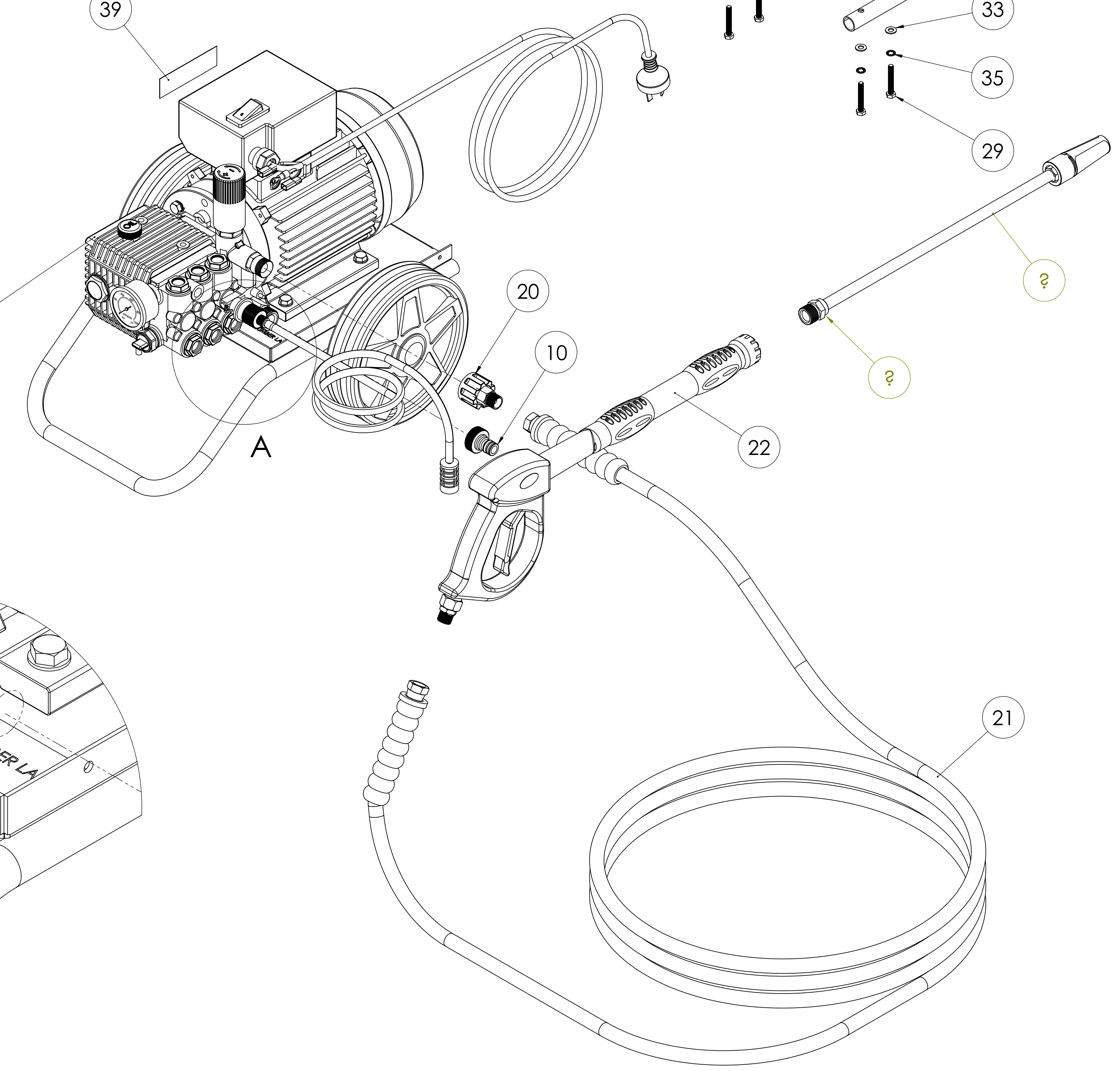
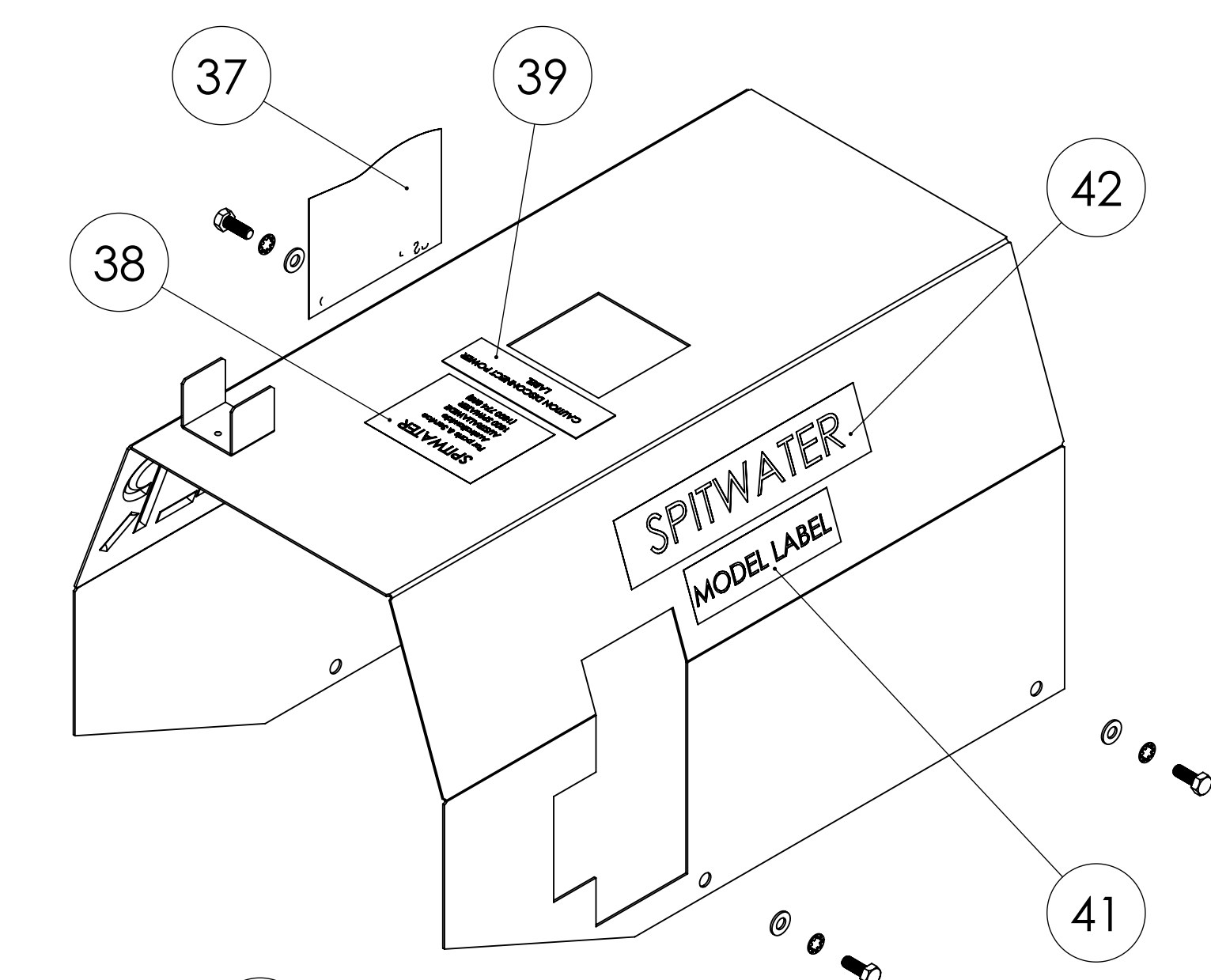
DESCRIPTION: 10-120C 1800PSI 10L/M 3HP 1PH 240/50	PART No. SLD10
MATERIAL:	QTY: -
TIME OF PRODUCTION:	ATOT:- FINISH:
SHEET 1 OF 2	



ELECTRICAL SWITCH LOCATION IN MOTOR



REMOVE THE STICKER OF THE PUMP



DETAIL A
 SCALE 1 : 1

SPECIAL INSTRUCTION TO FOLLOW BEFORE ASSEMBLING THE WHEELS

ENSURE HOLES IN THE BASE ARE PAINT FREE FOR FITTING THE COVER COMPLETE (PART NO - 48081)

	DATE	NAME
APPROVED		
CHECKED		
DRAWN	13/09/2017	Rajdev

SCALE
 1:3



HEAD OFFICE AND MANUFACTURING PLANT
 953 METRY STREET, ALBURY,
 NSW 2640, AUSTRALIA
 PH. 02 60257255 FAX. 02 60401187
 E-MAIL: enquiries@spitwater.com
 WEB SITE: www.spitwater.com

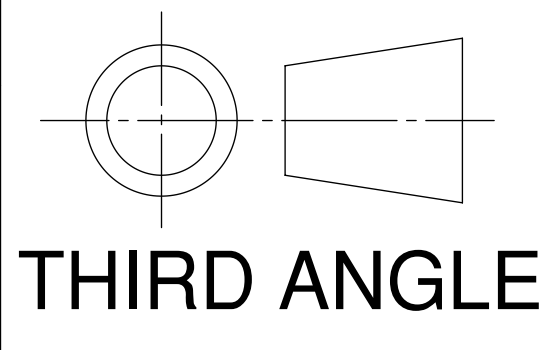
DESCRIPTION:
 10-120C 1800PSI 10L/M 3HP 1PH 240/50

PART No.
SLD10

MATERIAL:
 TIME OF PRODUCTION:
 ATOT:-
 FINISH:

QTY: -
SHEET 2 OF 2

DO NOT SCALE DRAWING



REV.	SERIAL NUMBER	ISSUED FOR CONSTRUCTION/DN	AMENDMENT	BY, CHK/APP	DATE
A					6/04/2016

NOTES: